



London Mozart Players Impact Report

1 July 2024 – June 2025

Welcome from our CEO and Chair



Credit: Marc Gascoigne

I'm thrilled to be joining London Mozart Players at this exciting time, and to build on the strong foundations Flynn Le Brocq helped establish. His leadership has shaped a resilient and ambitious orchestra with deep community roots.

This Impact Report reflects on an outstanding year of concerts as well as highlighting LMP's work beyond the concert hall - through education, partnerships, and a focus on access and inclusion. I'm inspired by the dedication of our musicians, staff, board, and supporters, and I look forward to shaping the orchestra's next chapter: one that is artistically vibrant, socially engaged, and sustainable.

Chrissy Kinsella, Chief Executive



I am delighted to introduce London Mozart Players' 2024-25 Impact Report – a season full of celebration and creativity.

Memorable moments (among many) included our community project Changing Seasons celebrating and responding to Vivaldi's Four Seasons anniversary, and the launch of American Friends of LMP in New York extending our reach and building international connections with the support of our Royal Patron, the Duke of Edinburgh. We also introduced our first sustainability policy, reflecting our commitment to responsible practice and positive impact.

I'm grateful to our musicians, staff, board, and supporters for their hard work and dedication, which makes this work possible. This report celebrates our achievements and sets the stage for an exciting future for LMP.

Sir Robert Lechler, LMP Chair

Vision and Mission

Our values guide us to inspire and connect communities through the transformative power of music.

- **Always Evolving:** Fresh, engaging performances and projects that push artistic boundaries and spark new ways of experiencing music.
- **Consistently Creative:** Collaborations that reimagine classical works, and innovative projects that connect with contemporary audiences.
- **Refreshingly Open:** Inclusive and welcoming, we reach beyond traditional concert halls to engage diverse audiences, musicians, and communities.
- **Unashamedly Ambitious:** Striving for excellence, expanding our impact, and inspiring the next generation of musicians and music lovers.

Our mission is to enrich lives, foster cultural connection, and keep classical music vibrant, relevant and exciting – today and for generations to come.

Our work in 2024/25 has resulted in...



The Orchestra

We are London Mozart Players: the oldest, freshest and most adventurous chamber orchestra in the UK. Set up over 75 years ago by Harry Blech to perform the works of Mozart and Haydn, our mission has evolved into creating bold, ambitious and accessible musical experiences for all.

LMP continues to build on our long history of association with many of the world's finest artists, including Sheku Kanneh-Mason, Angela Hewitt, Sir James Galway, Dame Felicity Lott, Jane Glover, Howard Shelley, Nicola Benedetti, John Suchet and Simon Callow. Our orchestra enjoys an international reputation, touring throughout Europe and the Far East and has recorded for Naxos, Chandos, Champs Hill Records, Delphium, Signum, Hyperion, Convivium Records and the German label CPO.

Artistic planning is guided by Principal Conductor Jonathan Bloxham alongside LMP Leaders Simon Blendis and Ruth Rogers – both members of the LMP Board – working closely with senior management and the Artistic Committee, which meets quarterly to shape our programming.

In the 2024-25 season, we announced that Christine Anderson was appointed to Viola No. 2 and Jessica Coleman was appointed as LMP Violin 1, No.3. Jessica has also assumed the position of Chair for the Players Committee, which meets monthly to support operational dialogue between players and management.

“I've had the most wonderful first three seasons with LMP, full of many highlights from touring in Europe together to our fantastic 75th Birthday Concert with very special soloists.”

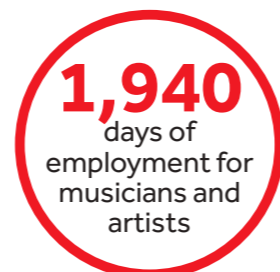
Jonathan Bloxham



We are....



In 2024/25 our Orchestra delivered...



Programme Highlight - Changing Seasons

Changing Seasons was a multi-genre performance reimagining Vivaldi's Four Seasons for the modern world, reflecting on the climate emergency through music, dance, poetry and film. Specially commissioned poems served as introductions, with local artists responding to a season working with composers Fiona Brice and Sarah Freestone to create new works. At Croydon's Fairfield Halls, the orchestra performed Vivaldi's Four Seasons alongside these new interpretations, performed by commissioned Croydon-based artists: Praveen Prathapan (Subrang Arts), Kars Dodds (Queer Croydon/Stanley Arts), Luminous Starchild (Club Soda), Young Strings, Woodwind and Brass Players (12 composers and 50 players from Croydon Music & Arts), and Jeremiah Brown (Poet). After the concert, each commissioning partner hosted a concert featuring their new work within their communities.



“LOVED the concert! Amazing commissions, performances, lighting and effects.”

“We had different opinions and that is very interesting to talk about.”

“Brilliant,” “Authentic,” “Goosebump-inducing.”

Audience members

“Seeing one of our own up there in front of an orchestra matters. It says we belong in these spaces.”

Queer Croydon

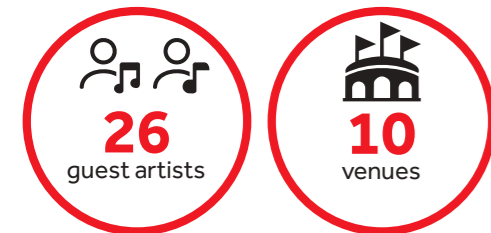


creative risk-taking • cultural fusion • developing artists

Concert Promotions

This season, LMP gave 19 self-promoted concerts that showed the orchestra's creativity, flexibility, and strong relationship with its audiences, with our players performing over 80 pieces of repertoire ranging from 17th-century works to music by living composers. Highlights included a new series at St Martin-in-the-Fields with soloists Jess Gillam, Zee Zee, and Angela Hewitt, plus concerto performances from our leaders Simon Blendis and Ruth Rogers. We also celebrated a milestone with five Piano Explored lunchtime concerts at St Paul's Knightsbridge, where pianist and conductor Howard Shelley led events marking the series' tenth anniversary.

Our self-promoted concerts, where we bear all financial risk, pair artistic quality with a strong focus on the audience experience, offering a warm welcome and clear, engaging programmes that help make concerts feel accessible and un intimidating.



Credit: Charles Lewis

Concert Engagements

Across the 2024–25 season, LMP was engaged for 62 performances, including high-profile choral society concerts, major festivals, and recordings for distinguished classical labels including Signum, Delphian Records, and Decca. These engagements took us to some of the UK's most iconic venues (among them the Royal Festival Hall, the Sheldonian Theatre, Canterbury Cathedral, Southwark Cathedral, and Alexandra Palace) and we were proud to continue our long-standing residency with Grayshott Concerts in Surrey. Internationally, we were invited to perform in Jersey as part of the Moments Musicaux Series and toured to Switzerland and Germany, sharing our music with audiences across Europe.



Credit: Sophie Oliver

artistic excellence • vibrant classics • welcoming atmosphere

Special Events



Dinner at Windsor Castle

LMP is deeply grateful for the continued support of our Royal Patron, HRH the Duke of Edinburgh. In June, we were honoured to host our annual Royal Gala Concert and Dinner in the magnificent surroundings of Windsor Castle - an unforgettable evening of music and celebration held in appreciation of our generous donors, whose support helps sustain the orchestra's artistic excellence and community work.

“An intimate, exclusive yet warm evening well-hosted by HRH with a top notch performance.”

Dinner at Windsor Castle Guest



Tasting Notes

Audiences continued to grow for our distinctive Tasting Notes concerts - immersive musical wine-tasting experiences held at Smith Square Hall, where carefully matched string quartets complemented each wine. These events have become a much-loved fixture in our season, bringing together music, flavour, and conversation in an atmosphere of relaxed sophistication.

“A really great format - you have captured something rather special here”

Tasting Notes Guest



Podium

Our creative leadership programme offers an immersive experience designed to develop communication, trust, and teamwork within organisations. Three companies have benefited from these unique events this year (University of Exeter, Rathbones and LBC Wise Counsel), each gaining new insights into collaboration and creative leadership through the language of music.

“Under the guidance of Orchestra Leader Simon Blendis, we explored how the delicate art of making music offers deep, timeless lessons on leading teams.”

Exeter Business School



Education

Inspire

Our interactive assembly performances and whole-class composition workshops continued to inspire exceptional engagement in primary schools, with all teachers rating pupils' enjoyment and learning at the highest levels. Children showed increased focus and enthusiasm, with many teachers noting a positive transformation in classroom behaviour. Through consultation with Croydon Music & Arts, we ensured these opportunities reached schools most in need, alongside signposting to subsidised instrumental tuition. We were also engaged to deliver the Inspire programme in a school in Essex, extending our reach and impact to new communities.



“Those who struggle with behaviour were immersed and got involved.”

Primary Teacher



of primary children now want to learn an instrument



GCSE Music

Our workshops in Croydon and East Sussex secondary schools brought GCSE Music Set Works to life, dramatically boosting students' exam confidence and understanding. Music students were invited to attend LMP concerts at St John's Upper Norwood and De La Warr Pavilion, which featured set-work repertoire alongside open rehearsals and Q&A sessions with our musicians. Students described the experience of discussing the music with professionals as transformational - deepening their understanding and expanding their aspirations, with over half saying they are now more likely to consider a career in music. Teachers reported clearer learning pathways and fresh techniques to bring into their classrooms.

“Seeing it live with a full orchestra makes it more real.”

Student



of students say their GCSE Set Works understanding greatly improved

exceptional engagement • creative pedagogy • classroom impact

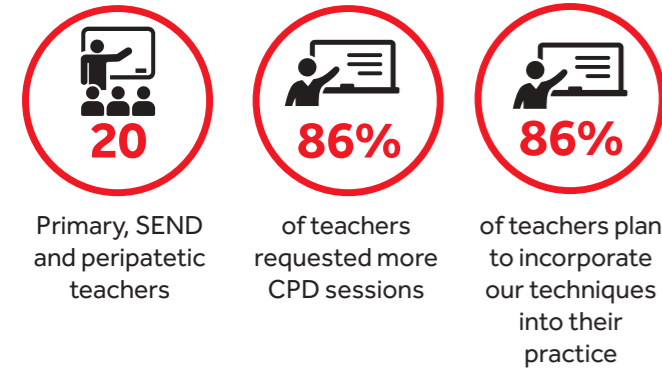


Learning

Whole Class Composition CPD

Our continuing professional development sessions for early-career primary and SEN/D teachers significantly boosted participants' confidence in teaching music within just three hours. Led by a composer and LMP players, the sessions shared accessible, creative techniques for whole-class composition using percussion, graphic scores, and non-musical stimuli. Developed in partnership with Croydon Music & Arts, the training responded to a critical gap in teacher training for music delivery. Feedback was overwhelmingly positive, with 86% requesting further sessions and many describing our resources as "gold dust" they could use immediately to bring music-making into their classrooms.

“I'm much more confident delivering practical music lessons now.”
Teacher

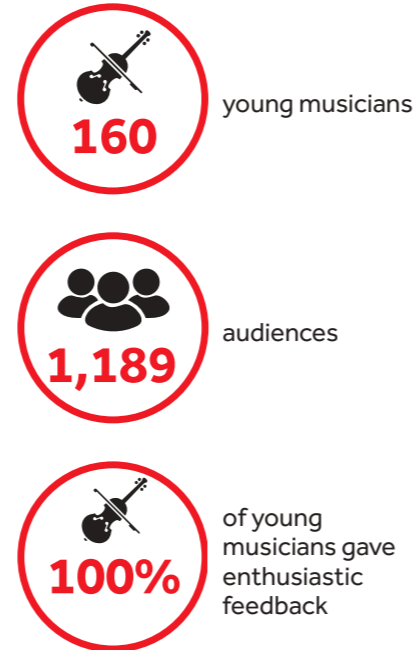


Young Musicians Side-by-Side

Young musicians from Croydon Music & Arts performed side-by-side with LMP in two major concerts at Fairfield Halls, gaining invaluable skills, confidence, and inspiration. At Changing Seasons, twelve CMA students co-created a new winter-themed commission with composer Sarah Freestone, which they premiered alongside LMP. They later returned to the stage for the United in Sound Gala, performing "Winter" and Jeff Moore's "Take Time", written for young performers aged 5–18. For many, it was a defining moment - students described the experience as "mind-blowing," "euphoric," and "surreal." The collaboration not only deepened their musical learning but also ignited new career ambitions and a strong desire for more side-by-side opportunities with LMP.

We were also engaged to deliver workshops and side-by-side projects with students at three London secondary schools, further inspiring and nurturing the next generation of musicians.

“I feel much more confident now I know I can compose something, and I can also play it.”
“It felt grand and really good.”



practical resources • increased confidence • improvement pathways

LMP in Croydon



Years as Croydon's Resident Orchestra

Our commitment to pioneering cross-cultural and community-focussed projects that keep classical music alive in Croydon and expand our fanbase continued, supported by our diverse local partners and advisory groups.



Changing Seasons Showcase at Fairfield Halls

A vibrant community showcase featured 18 local performance groups, including women's, youth, and multicultural ensembles. The event was a joyful celebration of diversity and creativity, a dynamic cultural exchange where audiences experienced a rich tapestry of global traditions and artistic expression.

“Seeing such different acts – we're all from different traditions but somehow it worked perfectly.”
Showcase Performer



community engagement • creative performances • audience development

LMP On the Move

Our pop-up concert series continued to bring classical music beyond traditional spaces. At Crisis Skylight Croydon, we performed for people experiencing homelessness, offering moments of connection and joy through live music. Performances at Westfield Shopping Centre and East Croydon Station stopped passers-by in their tracks with well-known works by Mozart, Bartók, Elgar, and Britten.

“I have never had the chance to hear this music before; I didn't even know that I liked it. And sitting there I just felt transported.”
Crisis Member



Community Concerts at St Johns Upper Norwood

We continued to engage young audiences and families with our "Musical Adventures of Stan the Dog and Mabel the Cat" concerts, beautifully narrated by Polly Ives and brought to life with projected illustrations. We celebrated the festive season with the joyous sound of our Brass Ensemble, joined by talented students from Croydon Music & Arts and the voices of the Croydon Bach Choir.



Strengthening the Charity

Steering Groups: We continued to meet with steering groups of local stakeholders, partners and community representatives to seek their input and feedback on our artistic and education programmes.



Sustainability Policy: Inspired by our Changing Seasons programme, we made progress in embedding environmental sustainability at the heart of our work this year. We adopted a new policy and established an action group comprising staff and an orchestra player. Together, they've reduced office consumption and concert waste, introduced more sustainable procurement, and drafted a green rider for the orchestra. Working collaboratively across the organisation, we've integrated sustainable travel messaging in marketing and communications, encouraging audiences, players and facilitators to choose lower-carbon journeys.

Player Recruitment: We continue to implement the 10 Point Action Plan for orchestral recruitment, developed with Black Lives in Music, the Association of British Orchestras and the Musicians' Union, to ensure fairer and more inclusive hiring of musicians. Although changes in the diversity of appointments are yet to be reflected in our workforce, we are considered sector leaders in our audition and selection processes, contributing to a wider culture shift in UK orchestras. In 2024-25, we appointed Christine Ander to Viola 2 and held trials for a further four vacancies.

IT Upgrade: Early in 2025, we conducted a comprehensive review of our data systems and implemented five new applications, including a phone system, box office solution, marketing platform, CRM, and survey tool. These upgrades have streamlined our operations, improved data integration, and enhanced the quality and efficiency of audience engagement.



reduction in car use by facilitators

Fundraising

In autumn 2024, we launched the Visionary Donors programme for supporters committed to contributing larger unrestricted donations over a minimum of three years, for a minimum of £30,000. This initiative provides vital long-term support, strengthening our financial resilience and enabling more confident forward planning.

Throughout December, we ran our Christmas Appeal and were selected to take part in the Big Give match-funded campaign in partnership with the Childhood Trust. We raised over £13,000, doubling the impact of individual donations and helping us bring our education programme to more young people.

In April, we expanded our long-established Friends scheme by launching the American Friends programme in New York City. The launch was marked by a special concert at St. Thomas Church on Fifth Avenue, attended by our Royal Patron, HRH the Duke of Edinburgh, and enjoyed by an audience of 100 guests, followed by a reception welcoming our 30 new Friends to the programme.

We received grants from Arts Council England (ACE), The Radcliffe Trust, D'Oyly Carte Charitable Trust, Garfield Weston Foundation and Croydon Council.



Credit: Helen Ho

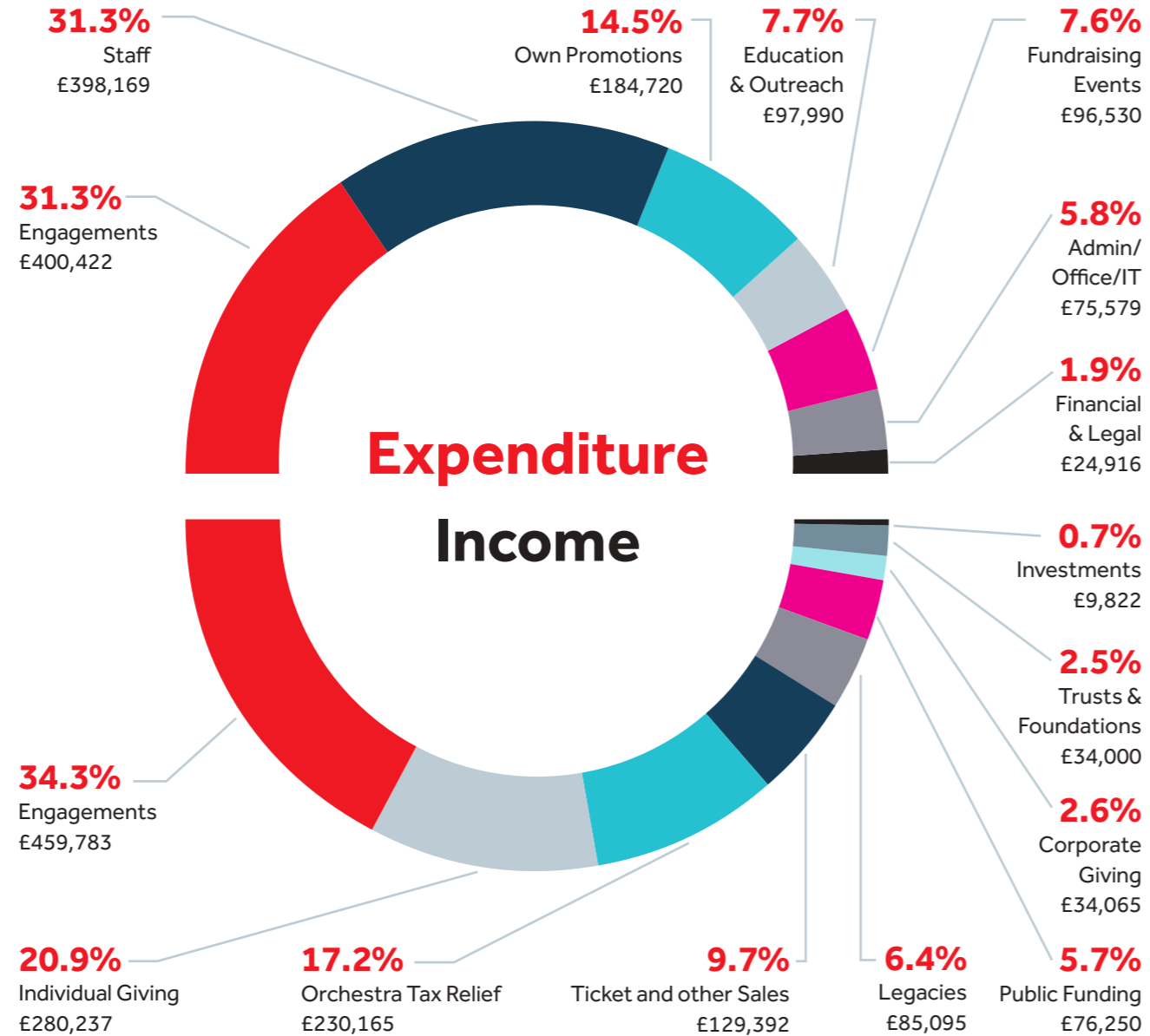
Finance Summary

Turnover in 2024/25 was £1.3 million, with the vast majority (68%) self-generated from paid engagements, donations, fundraising events, ticket sales and other earned income. The remaining 32% was made up of Orchestra Tax Relief, legacies, public funding and grants from trusts & foundations.

Expenditure totalled £1.26 million with the majority (62%) spent on direct event costs, split between engagements and our own promotions (47%), and education and community activities (13%). Direct fundraising activity expenditure was £54,586, just 4% of overall expenditure and is included in the overall staff expenditure.

Our surplus for the year was £54,587. This increased reserves to £313,223 with £77,676 in restricted funds, £93,000 in designated funds and £142,547 in unrestricted reserves. This represents 3.5 months of (non-performance) operating costs.

View a finance summary on the Charity Commission website.



Support Us



For more than 75 years, London Mozart Players has connected communities through the power of live music – touring internationally, inspiring young people through education projects, and sharing the joy of music making with people of all ages.

Help us continue to inspire audiences and reshape the classical music landscape for years to come.

Join the Friends of LMP

The Friends of LMP play a vital role in securing the future of the orchestra. Members of both our UK and American Friends programmes enjoy invitations to exclusive events, dedicated support from the LMP management team, and special behind-the-scenes access that creates meaningful connections and lasting memories with our orchestra. londonmozartplayers.com/friends

Sponsor a Chair

Our players are the heart of what we do. Becoming a Chair Sponsor is a chance to develop a uniquely close connection with the orchestra and our talented players in a way that isn't offered to the public. londonmozartplayers.com/chairsponsors

Be a Visionary Donor

Visionary Donors provide transformative, multi-year support that underpins LMP's artistic ambition and creative excellence. Their unrestricted generosity enables us to plan with confidence, elevate the quality of our rehearsals, concerts, and recordings, and invest in the orchestra's future. Each Visionary Donor relationship is bespoke, offering a highly personalised experience that reflects the passion and commitment of those who share in shaping LMP for years to come. londonmozartplayers.com/support-us/ways-you-can-give/major-gifts/

Leave a Legacy

Leaving a gift in your Will is one of the most meaningful ways you can support us. It shows a deep personal connection to our work and a belief that our orchestra should continue serving audiences and communities for generations to come. If you'd like to discuss leaving a gift in your Will, or to tell us that you've already done so, please contact us at legacies@lmp.org.

Find out more about supporting LMP on our website



Thanks

LMP would like to thank:

Our Public Funders, Trusts & Foundations



Our Corporate Supporters



Our Donors, Friends,
American Friends, Chair
Sponsors, Visionary Donors
and Legacy Donors

Our Board

Sir Robert Lechler*, Chair,
Simon Blendis,
Jonathan Feroze*,
Roanna Gibson*,
Antonia Kesel,
Simon James*,
David Lamberti*,
Ruth Rogers,
Martin Smith,
Peter Wright

* Trustees.

Our partners, collaborators,
community and school
participants, and all our wonderful
players and staff for their hard
work over the year.



London Mozart Players

Fairfield Halls, Park Lane, Croydon, CR9 1DG | 020 8686 1996 | info@lmp.org | lmp.org

London Mozart Players is the trading name of London Mozart Players Trust CIO

Registered in England and Wales with charity no. 290833